

CRS418-8P-8G-2S+RM

You wanted a switch that could do more.
So we built one that does everything.

~3x

more CPU processing power than a CRS320
or CRS328... and for a better price!



Sufficient processing power for routing!



**L3 HW
Offloading**



**Mighty Quad-core
2.2 GHz ARM CPU**



**16x Gigabit
Ethernet ports**

+ Gigabit management port with
a direct CPU connection



**Dual-redundant
power supplies**



USB 3



PoE-out



1 GB RAM



**2x 10G
SFP+ ports**

Why settle for just a simple switch when you can have **PoE-out, high-speed fiber uplinks**, USB storage compatibility, advanced network control/monitoring, and enough processing power even for some routing or L3 HW offloading... in a single 1U device and for the best price on the market?

The **CRS418-8P-8G-2S+RM** combines **16 Gigabit Ethernet ports** (eight of them with PoE-out!), two **10G SFP+ cages**, **USB 3 connectivity**, and a **powerful quad-core 2.2 GHz CPU** in a clean, durable rackmount enclosure. Also, there's a Gigabit management port with a direct CPU line.

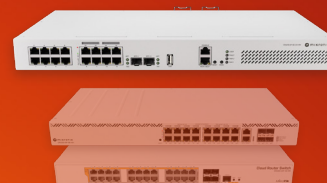
This is a serious upgrade for anyone looking to replace a jungle of devices with one smart multitasker – built for real routing workloads, high-bandwidth uplinks, and clean cable management. Whether you're powering up access points and CCTV cameras, running a fast NAS with a bunch of modern workstations, or managing the routing in your mid-sized office, CRS418 handles it all with ease – and on a budget!



CRS418 vs
CRS320-8P-8B-4S+RM/
CRS328-24P-4S+RM =

3x

the CPU performance!



Check out our YouTube and TikTube videos for this product!



Why CRS418?

It is perfect for hybrid Layer 2/3 environments – whether you're segmenting your network with VLANs or routing between them. Here's why:



Powerful enough to replace most small/medium office routers

Thanks to its 2.2 GHz **quad-core ARM CPU**, L3 hardware offloading, and **RouterOS v7**, you can use it as an **internet gateway**, firewall, and even a **CAPsMAN** controller.



8x PoE-out ports (802.3af/at and 24V Passive PoE-out)

Power your devices directly from the switch with up to **150 W total output**.



17 Gigabit Ethernet ports

Organize all your gear with a mix of PoE and standard Gigabit ports in one rack-mountable unit. Having a nice, clean server room is easy – if you have the right tools.



2x 10G SFP+ cages

Connect to media servers, fast ISP fiber networks, core switches, or high-speed storage.



1U rackmount case with redundant power inputs

Space-saving and secure with dual AC inputs for extra peace of mind.



USB 3 for extra storage or configuration tools

Perfect for backups, logs, databases, or pushing large files around your organization.



RouterOS v7

Use all the advanced switching and routing features MikroTik is known for. No subscriptions, no paywalls, the only limit is your imagination. VLANs, ACLs, SNMP, advanced monitoring & traffic shaping, and so much more!

CRS418-8P-8G-2S+RM is more than a switch.

It's a real multi-tasking champion that keeps your network lean and your server room clean.

• Specifications

Product code	CRS418-8P-8G-2S+RM
CPU	Quad-Core IPQ-8072 2208 MHz
CPU architecture	ARM 64bit
RAM	1 GB, DDR3L
Storage	128 MB, NAND
Number of 1G Ethernet ports	17
Number of 10G SFP+ ports	2
USB ports	1 USB 3.0 type A
Switch chip model	98DX226S
Dimensions	443 x 230 x 44
Operating system	RouterOS v7, License level 5
Operating temperature	-20°C to +70°C

• Powering

Number of AC inputs	2
AC input range	100-240 V
PoE-Out	802.3af/at
PoE-Out ports	Ether9 - Ether16
Max out per port output (input < 30 V)	1.1 A
Max out per port output (input > 30 V)	0.55 A
Max total out	5.4 A
Total output power, W	150 W
Max power consumption (without attachments)	28 W
Max power consumption	215 W

• Included parts



2x power cord



Rackmount bracket



Fastening set